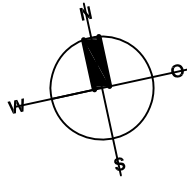


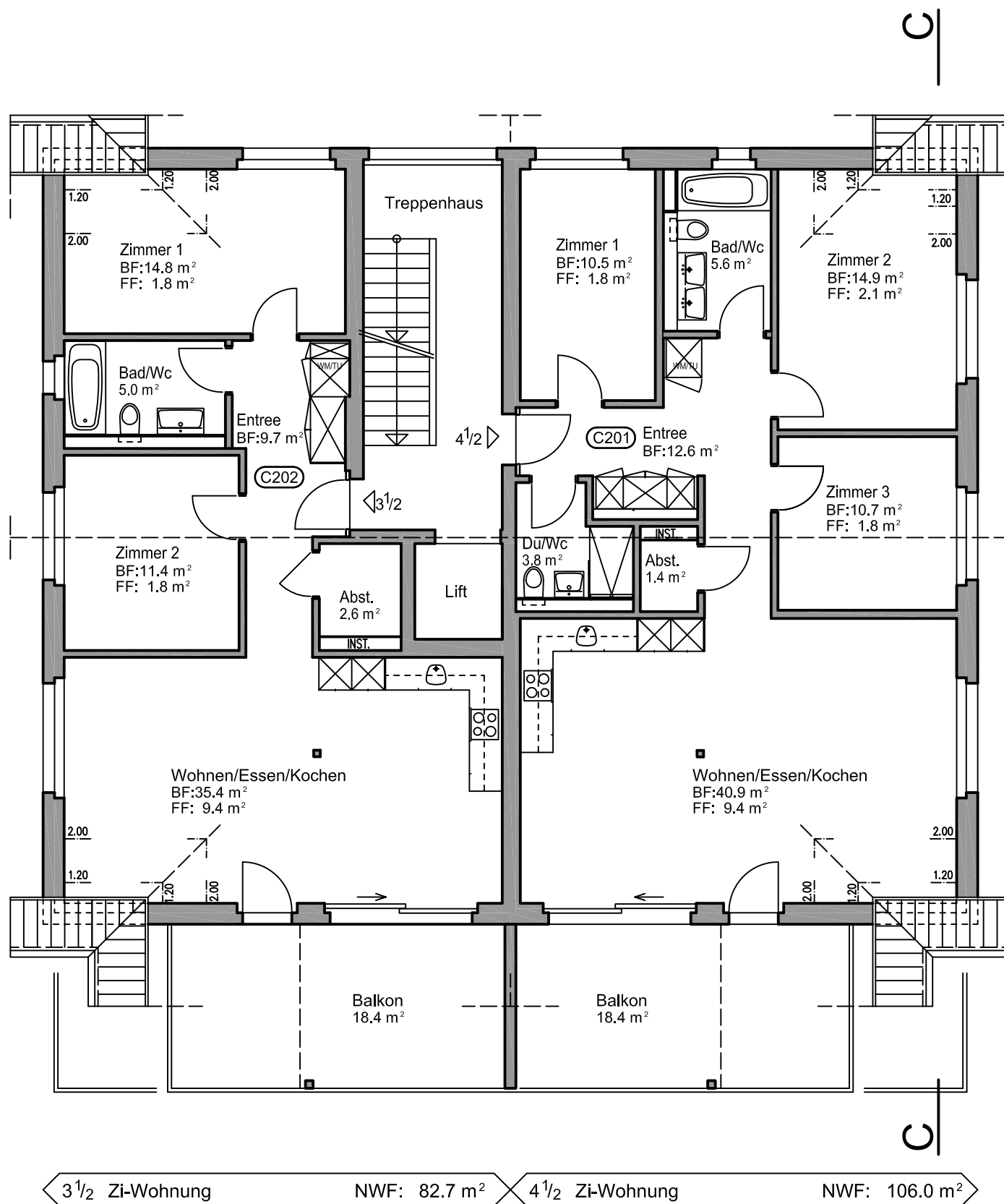
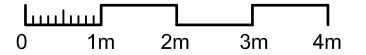
ARCHI - TEAM CB GmbH

Planung + Bauleitung

UNTERDORFSTRASSE 32
 CH - 8494 BAUMA
 TEL. 052/397'11'11
 MAIL: c.bosshard@archi-team.ch
 DATUM: 30.06.2023/cb



Mst. 1:100



3 1/2 Zi-Wohnung

NWF: 82.7 m²

4 1/2 Zi-Wohnung

NWF: 106.0 m²

1. Dachgeschoss MFH C